

Daily Update

Total Confirmed Cases	Cases Reported	Recovered Patients	Active Patients
8,925	12	8,760	25
Hospitalized Patients	Deaths	Tests Conducted*	Negative Cases*
12	140	58,750	48,905

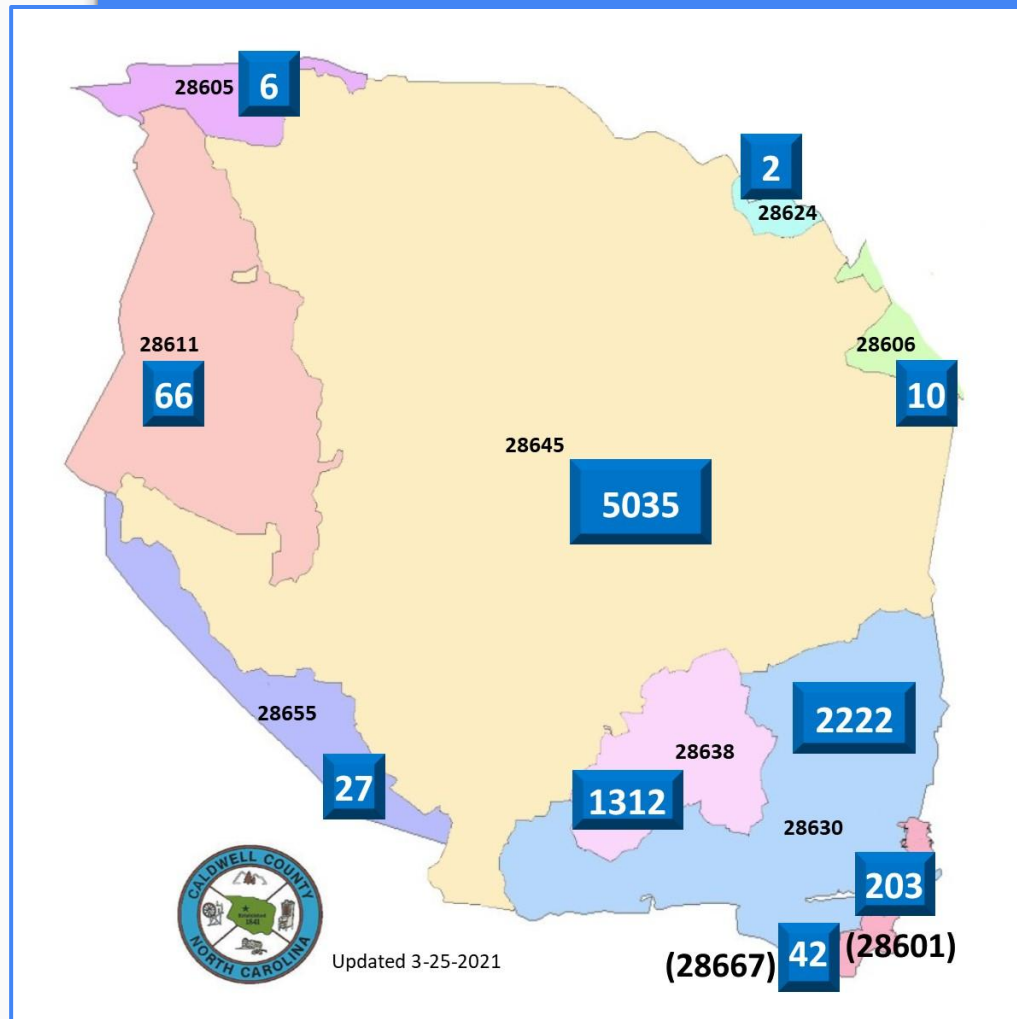
**The Health Department reports the number of tests it conducts as well as those done by Caldwell UNC and a few other reporting providers. As the pandemic has continued, more providers are conducting COVID tests, but few report the number of tests conducted and their negative results to the Health Department. Because not all providers report the number of tests conducted, the county's positivity rate has been falsely elevated. Moving forward the county's positivity rate will no longer be reported. To find the positivity rate for the county, visit <https://covid19.ncdhhs.gov/dashboard/testing>.*

Current Outbreaks

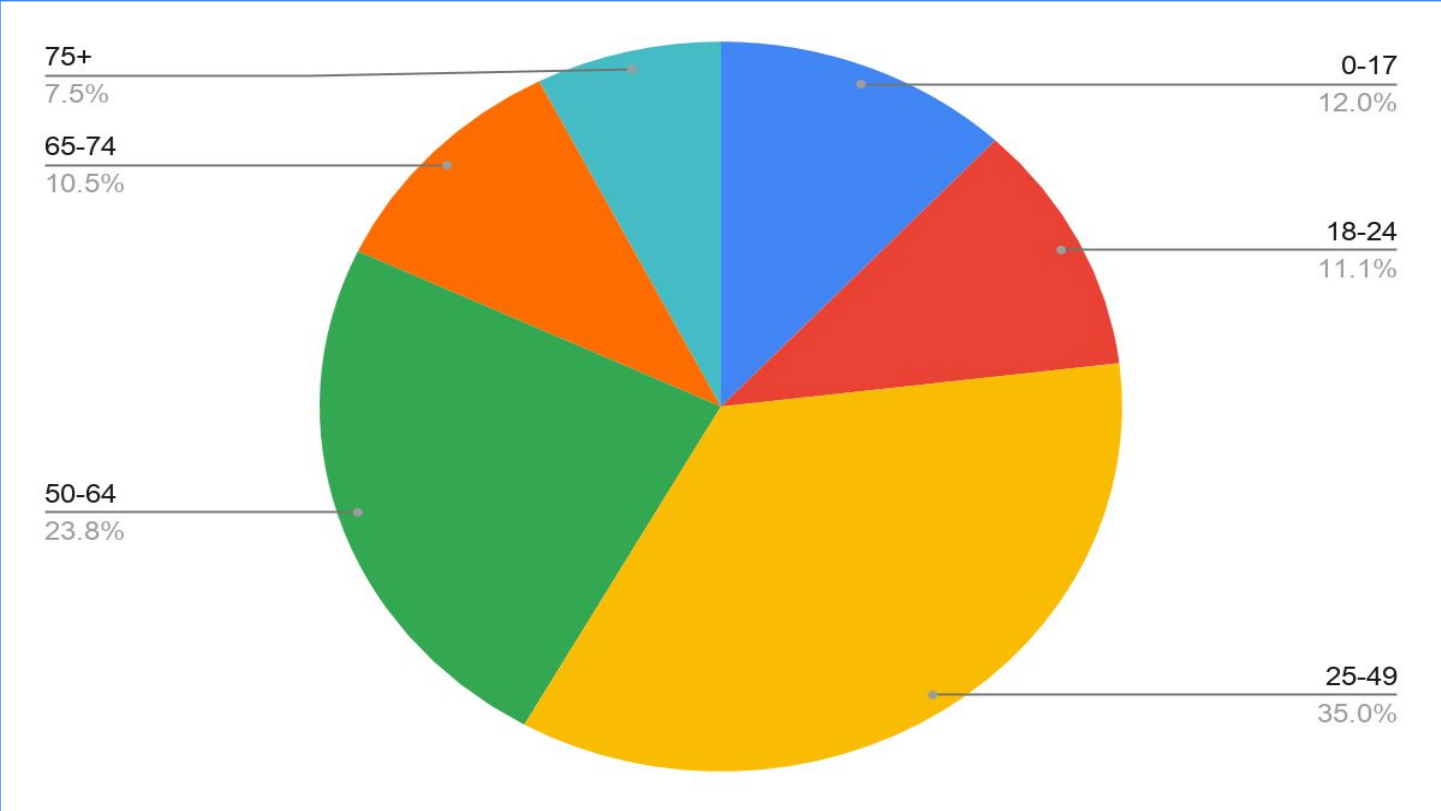
In congregate living settings, an outbreak of COVID-19 is defined as two or more laboratory-confirmed cases within a 28-day period.

Gateway Rehabilitation and Healthcare
Hickory Falls Health and Rehabilitation
Lenoir Health Care
Shaire Center Skilled Nursing Facility

Cases by Zip Code



Cases by Age



Cases by Race

Number and Percent

Multi-Racial

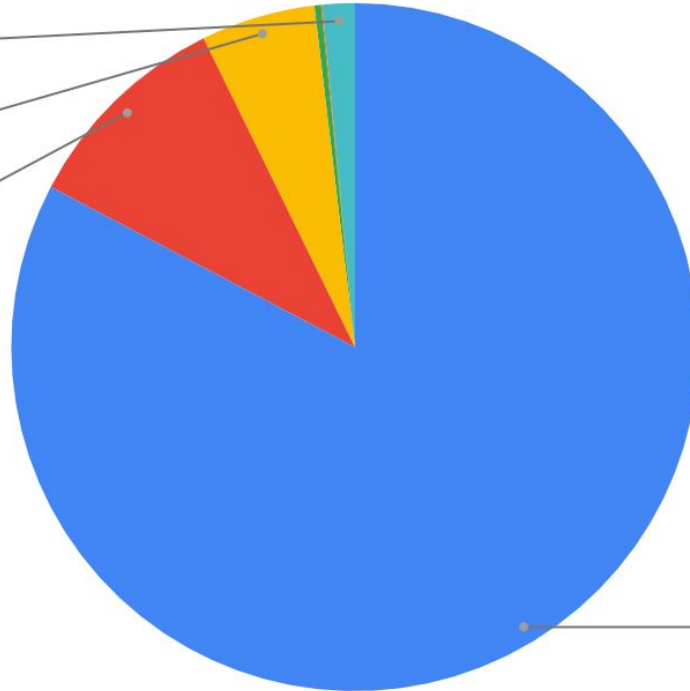
1.5%

African American

5.4%

Hispanic

10.0%



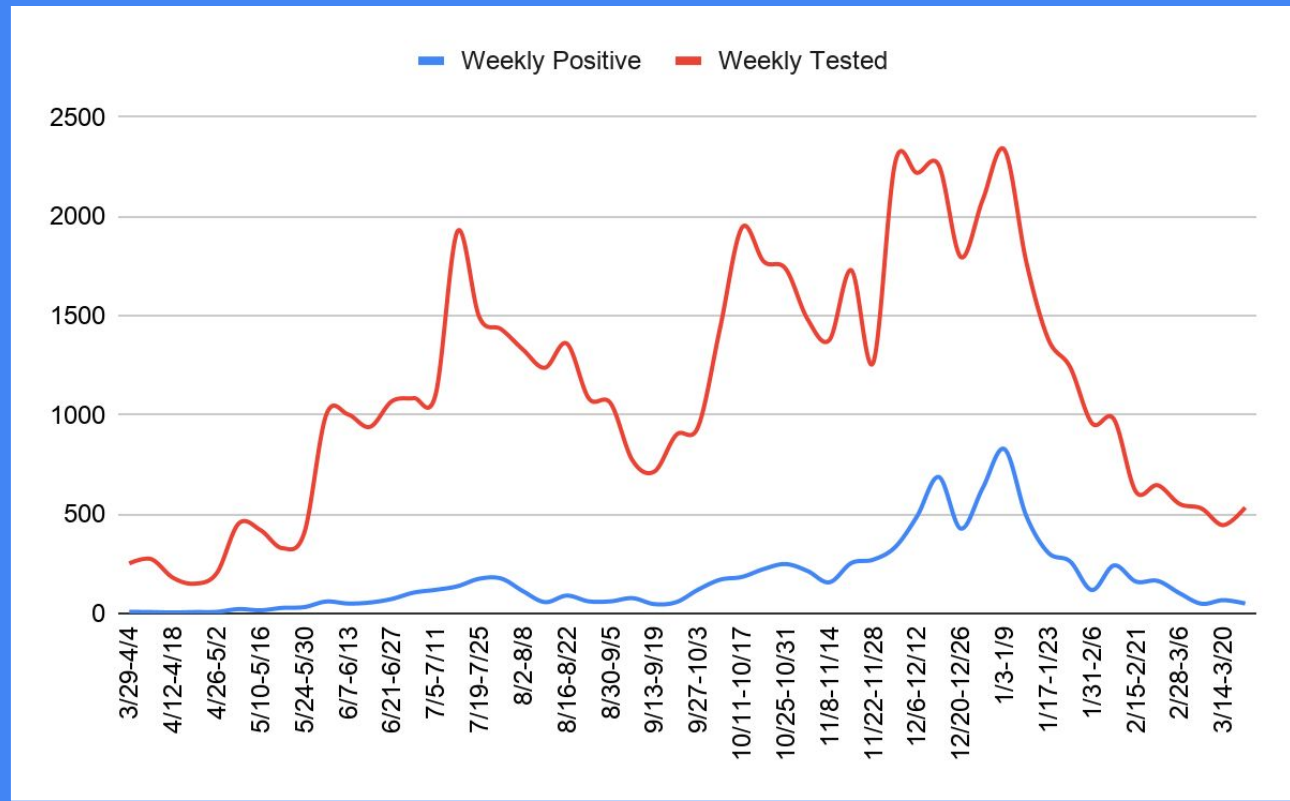
White

82.7%

Weekly Comparison

This chart compares the number of tests reported weekly to the Health Department and the total number of positive patients reported weekly.

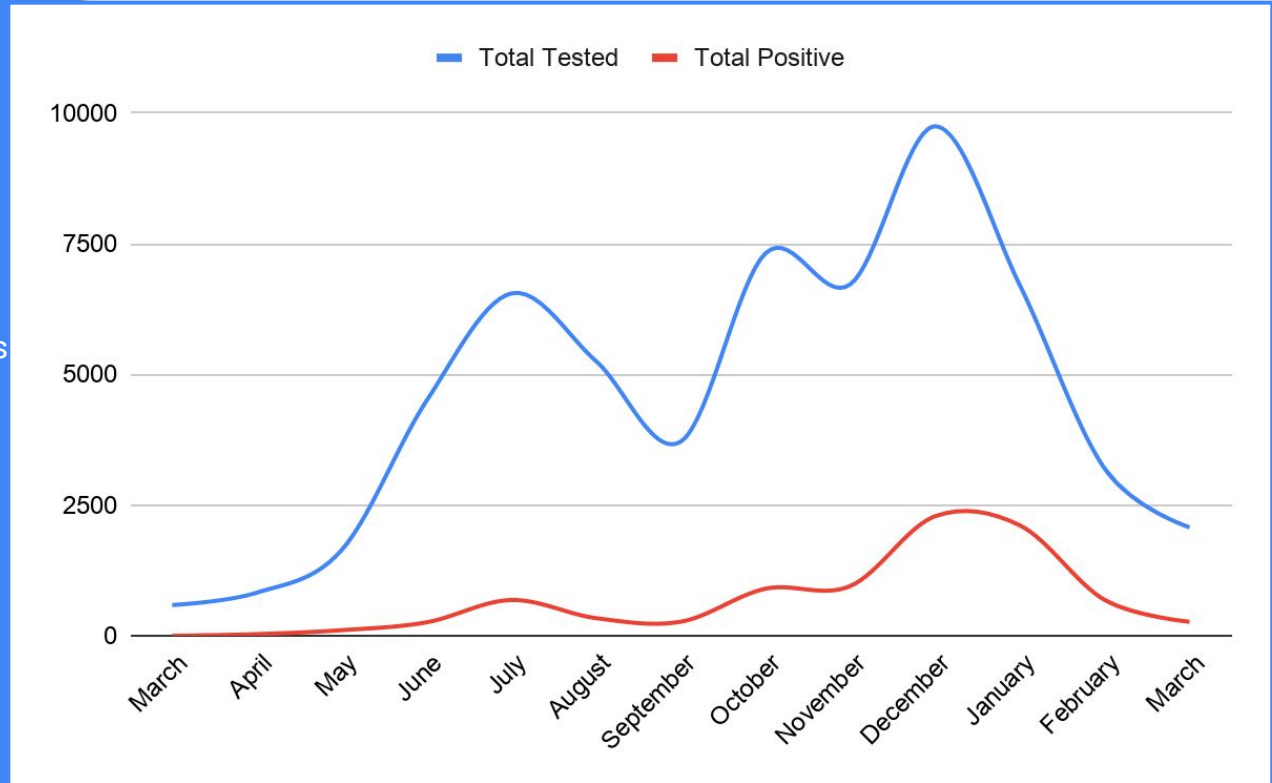
Not all providers report the number of tests conducted to the Health Department.



Total Tested by Month Compared to Total Positive by Month

This chart compares the number of tests reported monthly to the Health Department and the total number of positive patients reported monthly.

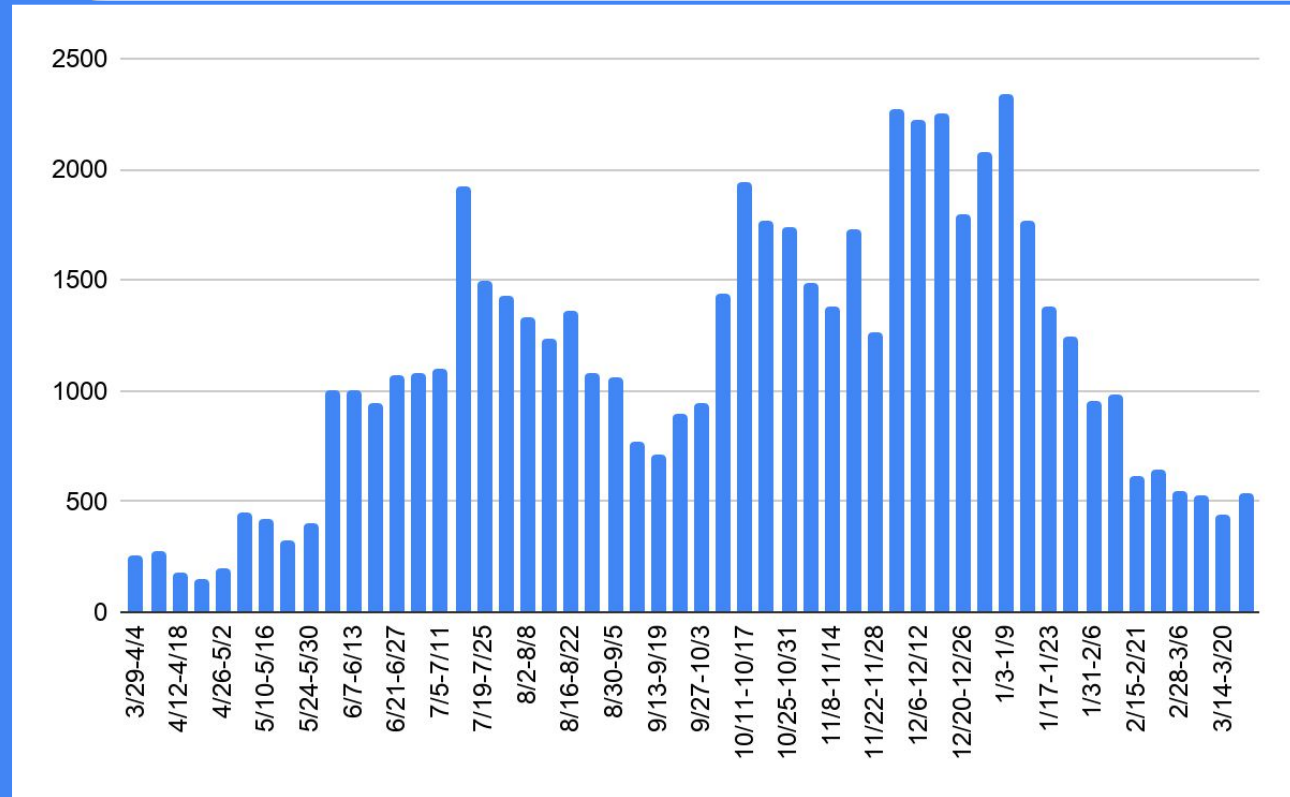
Not all providers report the number of tests conducted to the Health Department.



Tests Conducted Weekly

This chart shows the number of tests conducted weekly as reported to the Health Department.

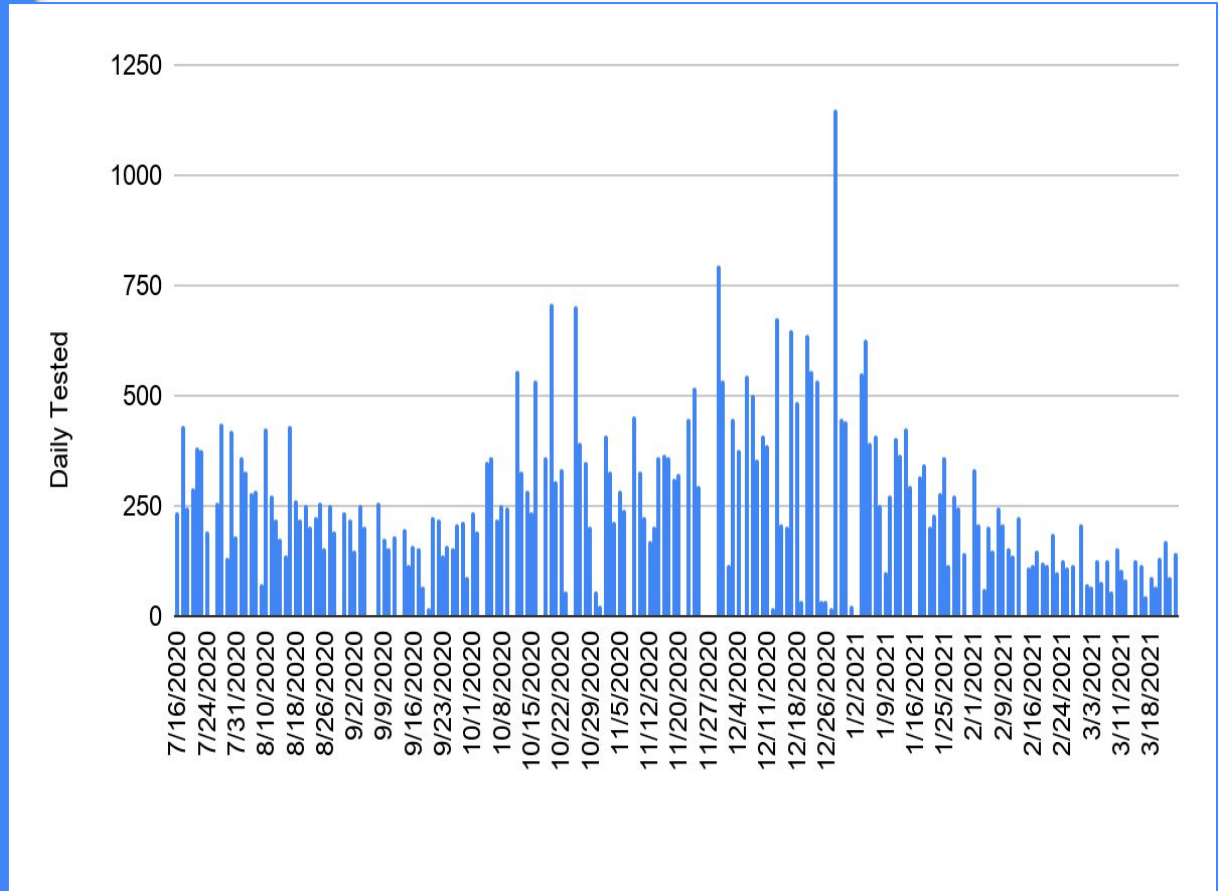
Not all providers report the number of tests conducted to the Health Department.



Tests Conducted Daily

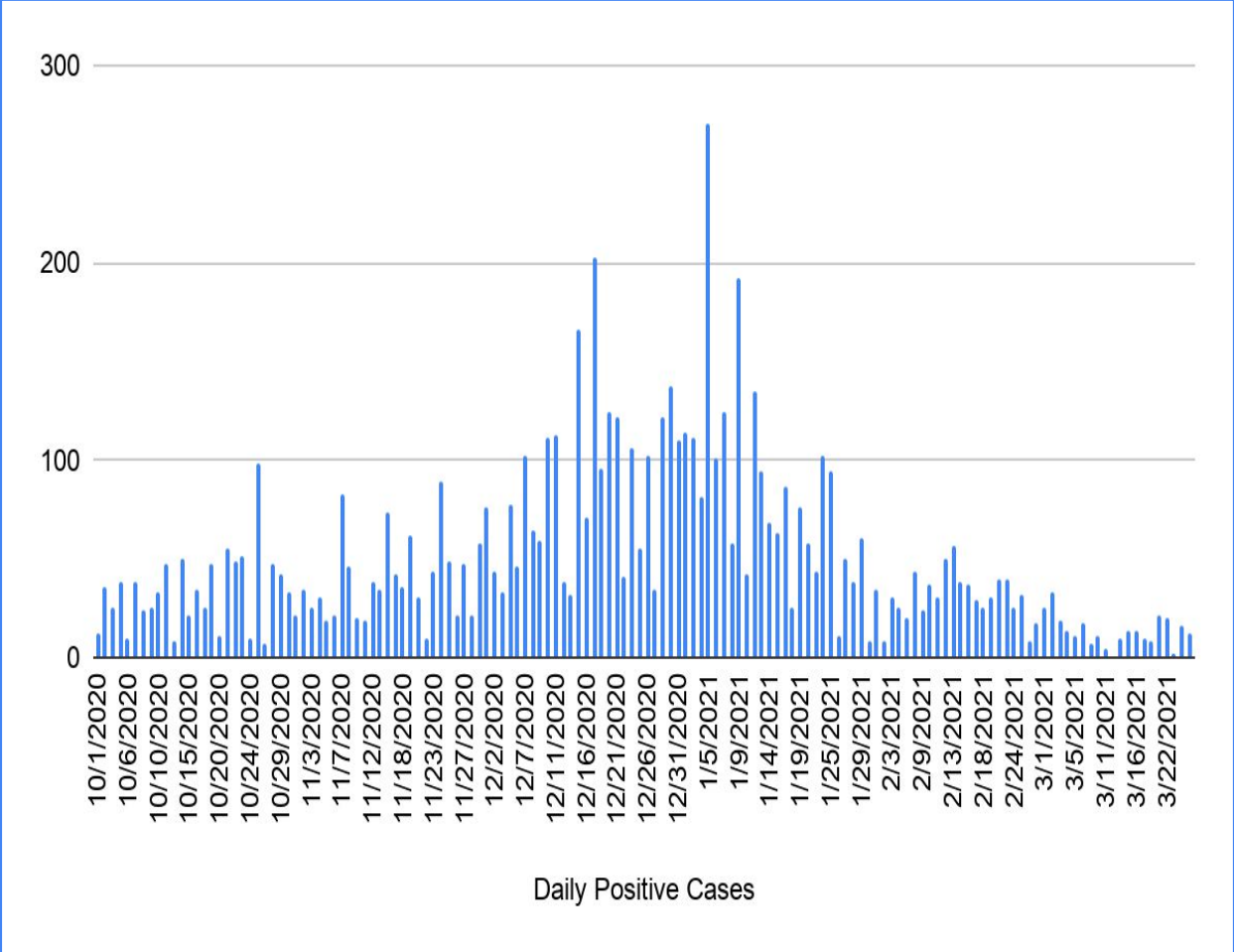
This chart shows the number of tests conducted daily as reported to the Health Department.

Not all providers report the number of tests conducted to the Health Department.



Positive Cases Reported Daily

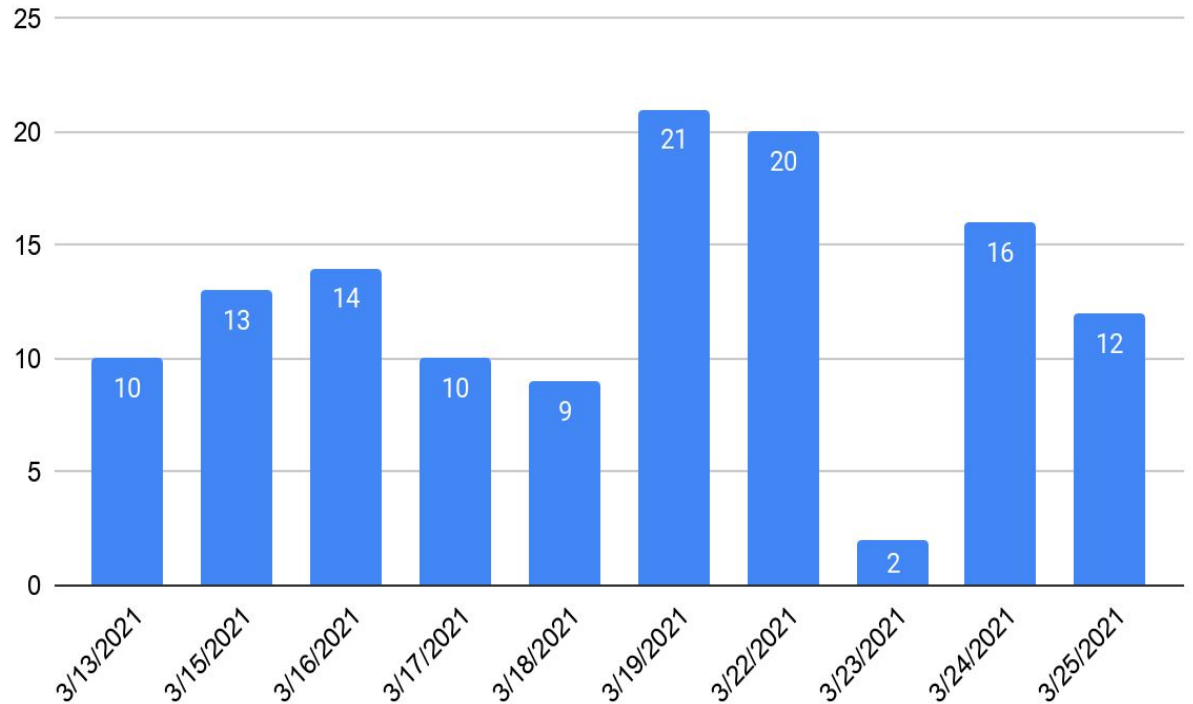
This chart shows the number of positive cases reported daily in Caldwell County.



10-Day Positive Case Count

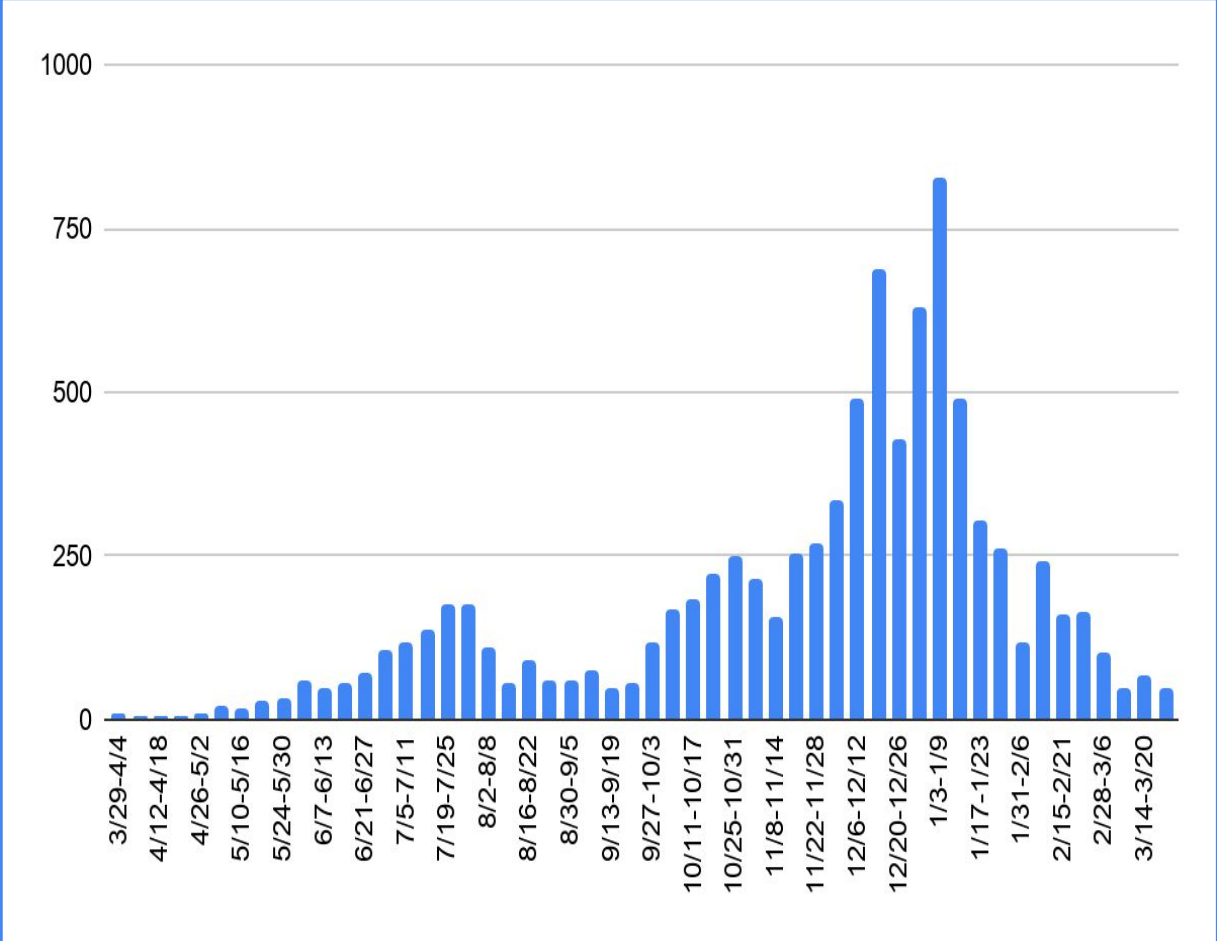
This chart highlights the number of positive cases reported daily for the past 10 days.

Positive Case Count



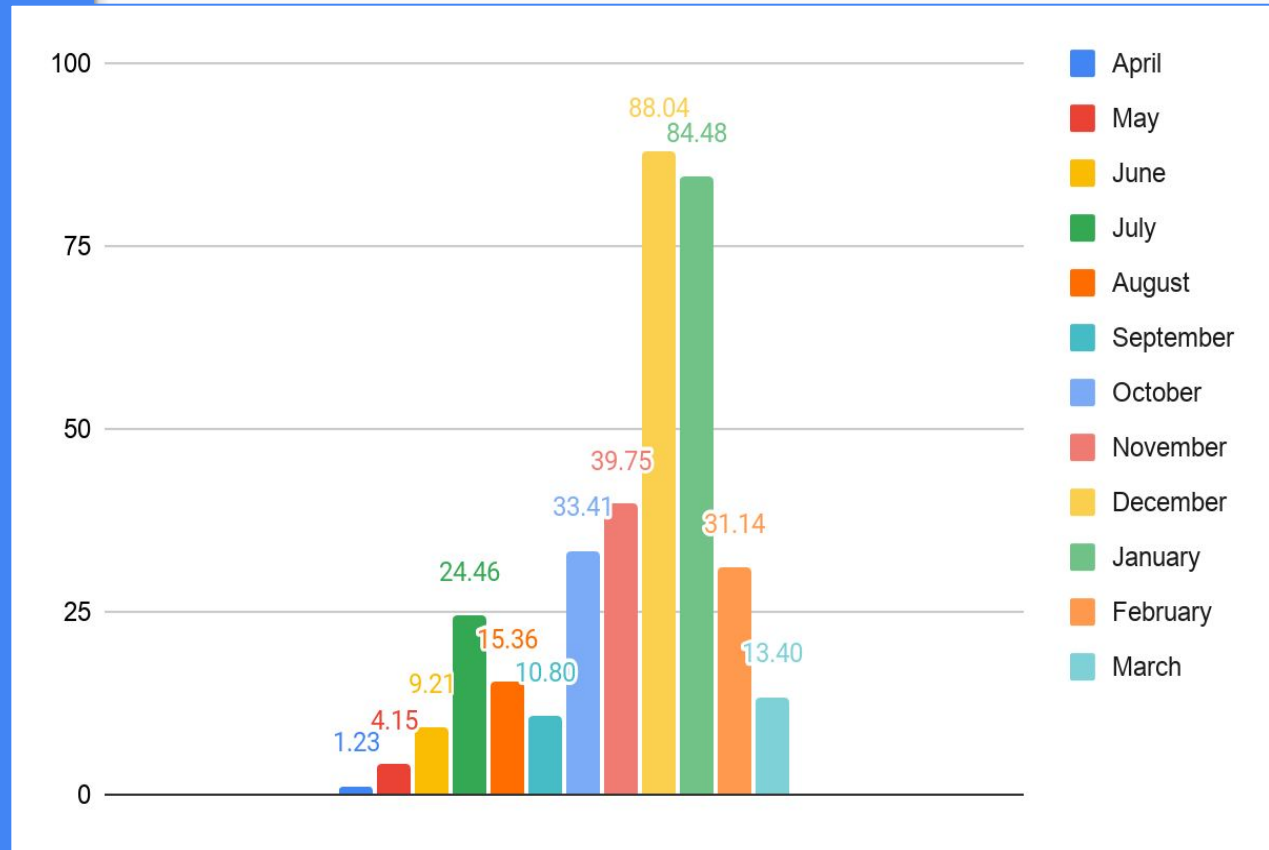
Positive Cases Reported Weekly

This chart shows the number of positive cases reported weekly.



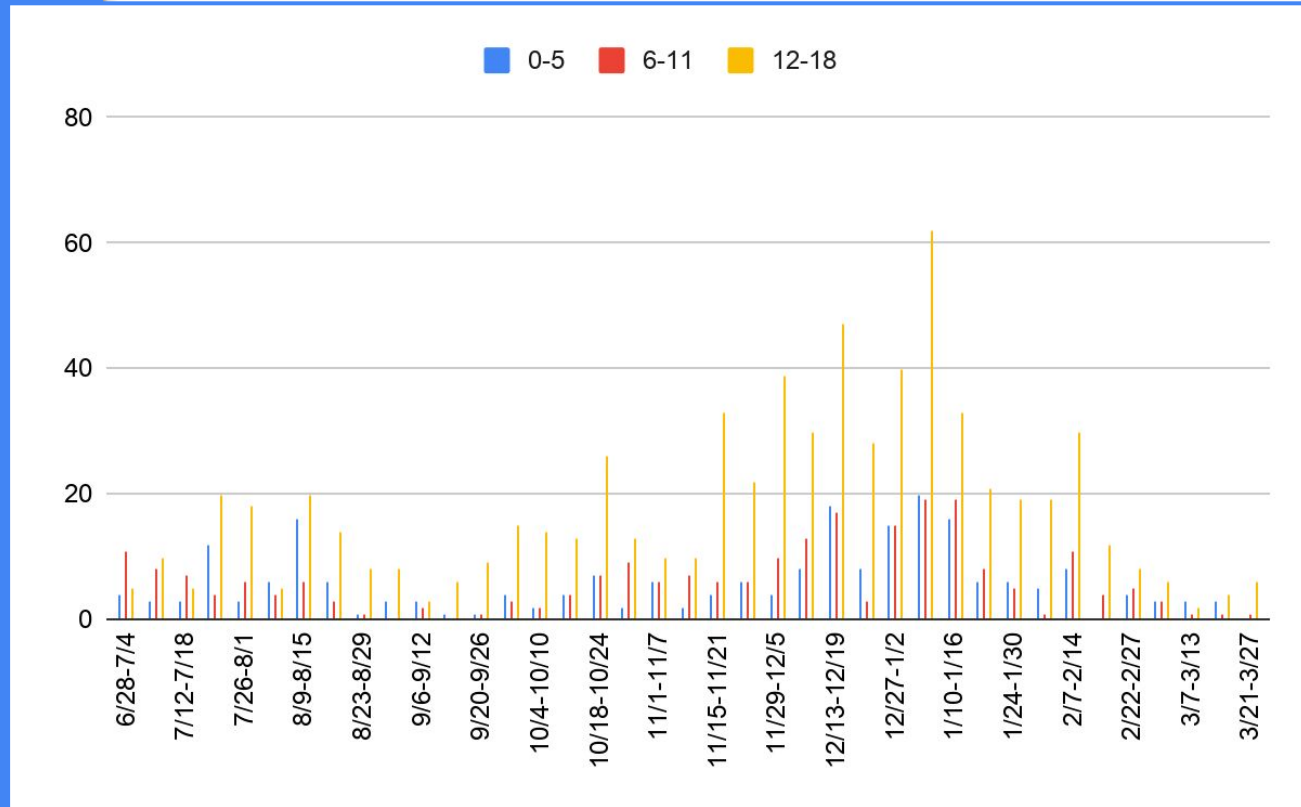
Average Number of Cases Reported Daily

This chart shows the daily average of positive cases reported each month.



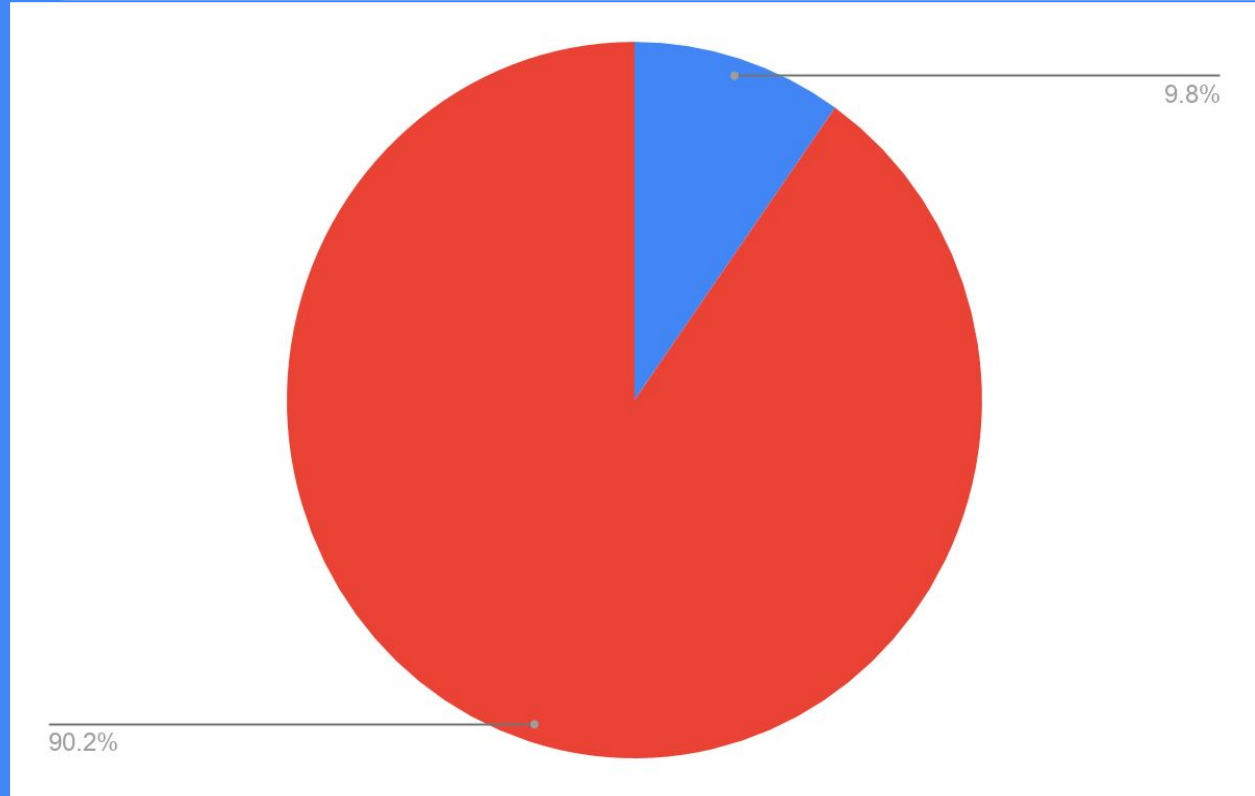
Cases Among Children

This chart shows the number of cases per week among children 18 years old and younger.



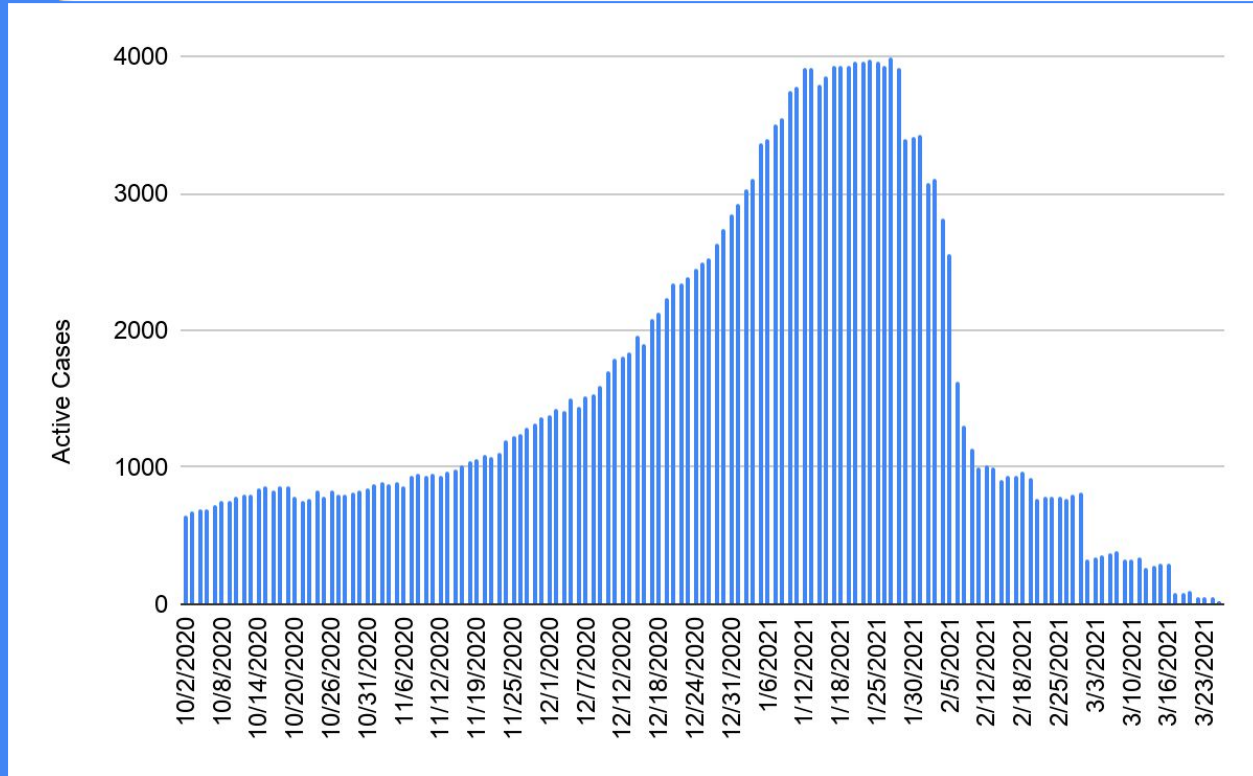
Total Positive Cases Compared to County Population

This chart compares the total number of positive COVID-19 patients with the total population of Caldwell County. According to the US Census, the total population for Caldwell County is 82,178.



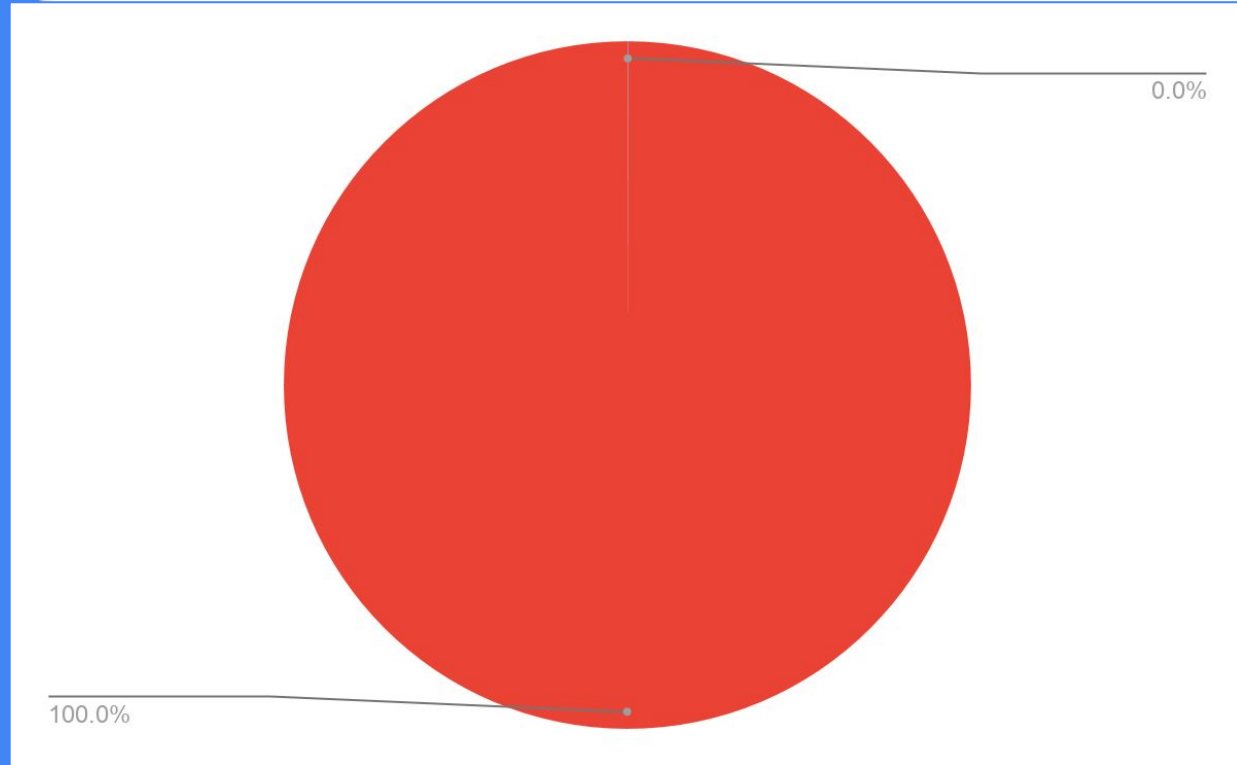
Active Cases

This chart shows the number of active COVID-19 cases per day in Caldwell County.



Active Cases Compared to County Population

This chart compares the number of active COVID-19 cases to the total population of Caldwell County. According to the US Census, the total population for Caldwell County is 82,178.



Hospitalizations

This chart shows the number of COVID-19 patients hospitalized daily.

